

# The Venture Information System 2.5

## Features & Benefits



**VISCO LLC**  
106 Enterprise Drive  
Kingston, NY 12401 (845) 383-3800  
[www.ventureinformationsystem.com](http://www.ventureinformationsystem.com)



**\*Venture = Purchase Order Shipment**  
**\*\*Containers Hold One or Many Ventures**

## The Venture Information System

### Introduction

Thank you for your interest in the Venture Information System. Picking up this document represents the first step on your journey to a better way of doing business. The Venture Information System (VIS) is designed to provide a comprehensive view of the financial and logistical information that is the lifeblood of your importing business. That translates into many things, but the 3 chief functions of VIS are costing, supply chain visibility, and customs compliance (generation and management of the documents required for the importation of goods).

“Our approach to the development of the Venture Information System was from the sales, financial and logistic perspectives...” says VISCO Vice President of Sales, Tim Peck, “...Rather than beginning with a system for record keeping and accounting; then trying to incorporate inventory tracking and financial analysis, we completely reversed the development process.”

The quote above perfectly demonstrates what makes VIS uniquely suited to the importing industry: VIS was designed specifically to address the distinctive needs of Importers. VIS provides the means for every department within a given company to operate at maximum efficiency. We offer sophisticated financial analysis tools, easy to understand product positioning for sales representatives as well as automated documentation and detailed goods tracking. The movement of goods is tracked through all steps of the importing and sales processes at the individual package level. Accrued or Actual costs and sales prices are accumulated at each step, allowing for progressively more accurate projections of landed cost and profitability at the shipment level. The system also allows for flexible product specifications & analysis, and matches customer requirements to vendor specifications to assure accurate order fulfillment.

Iterations of VIS have been in use since the project was begun as a custom application in 1990. Over the last 15 years, our developers (many of them importers themselves) have logged tens of thousands of hours refining the system. Today's VIS described in these pages is now a fully Web-Based application, utilizing a SQL backend. Our use of Microsoft's .NET Architecture will ensure that the system will remain fully scalable for many years to come. Additionally, by design the system is available at the semi-customized industry specific level. This means that a customer will see a package that incorporates the terms and information relevant to their specific industry vertical. Further customization is available to provide the terms and information specific to each company.



**\*Venture = Purchase Order Shipment**  
**\*\*Containers Hold One or Many Ventures**

## Feature Overview

The screenshot shows the VISCO 2.1 Home Page in a Microsoft Internet Explorer browser window. The browser title is "Visco - Venture Information System - Microsoft Internet Explorer". The address bar shows "http://www.visco.com/". The page has a blue header with the VISCO logo and navigation tabs for "Sales & Purchases", "Logistics", "Inventory", and "Finances". The main content area is divided into several sections:

- Quick Task:** A list of tasks with checkboxes: Product Position, Venture Analysis, Container Management, Logistics, Finances, Sales and Purchases, and Inventory.
- Company News:** A news item about a picnic at Tavern on the Green in Central Park, scheduled for June 19, 2003.
- Company Information:** Details for Jamison Textile and Apparel Co., including Name, Address, and Symbol (IPL).
- Calendar:** A calendar for April 2005, showing dates from 1 to 30.
- System Admin:** A link to the system administrator page.

The browser's status bar at the bottom shows "Trusted sites".

## VIS 2.1 Home Page

The Venture Information System's many functions are interdependent. From initial set-up through every day use, the more information that feeds through the system, the more accurate and extensive the output will be. That accurate and extensive output will form the foundation for a newly streamlined and cost-efficient business process. Below is an overview of the system's features:



**\*Venture = Purchase Order Shipment**  
**\*\*Containers Hold One or Many Ventures**

#### **Financial Tools**

Shipment Level Cost Analysis  
Profit & Loss Reports by PO Shipment  
Inventory Valuation  
Additional Financial Reporting

#### **Customs Tracking**

Duty Calculation/Unit of Measure Conversions  
Customs Broker Management/Automated Broker Interface  
Image Capturing for Documents  
Sophisticated Sorting and Filtering Capabilities

#### **Logistics Management**

Order Matching and Billing (Invoicing)  
Order Tracking (At Source / In Transit / At Warehouse)  
Back-to-Back Ordering  
Order Packing Lists in MS Excel®  
Re-packaging and Transfers  
Order Shipping - Delivery Orders, MSDE and Associated Images  
Document Preparation in MS Word®  
Return Processing - Sales & Purchase Returns  
Open Orders Lists  
Cost Entry  
Shipment Level Management

Sophisticated Sorting and Filtering Capabilities  
Certificate of Analysis in MS Excel®

#### **Sales Orders & Purchase Orders Maintenance**

Order Assigning, Preparing, Viewing, Issuing  
Multiple products & multiple shipments  
Order Drafting  
Order Changing or Canceling  
Foreign Currency Exchange Rate Calculations

#### **Sales Tools**

Product Position (Status Reports) in MS Excel®  
Remote Access  
Sales Order/Purchase Order History

#### **Product/Customer/Vendor**

Extensive History  
Image Capturing  
Viewing Information  
Adding and Editing Information

#### **System Management**

User Functions (Display Active Users, Edit/Change/Print Users)  
Accounting Interfaces, Printer Settings, User Restrictions  
Change Accrued Costs  
Ability to Purge and Archive Data

## **Ventures and Containers Defined**

We never want to forget that Global Trade can be a risky business. That's why we used the term Venture in our name. The **Venture Information System** is an *Importer-Specific* Enterprise Resource Planning application that is revolutionizing the way importers are doing business specifically because of its focus on Ventures. For our purposes, **a venture is a purchase order shipment**. Though VIS can accommodate importation by truck, rail, air, or on the water, the vast majority of ventures are shipped in containers. It is important to note that **a container may hold one venture or many ventures**. For easy reference, a reminder of this appears at the top of each page of this document.

## **Integrations**

The power of the Venture Information System is greatly enhanced by extensive integration with the **Microsoft Office Suite**. This integration allows VIS to extend its functionality, usability, and scalability beyond nearly all competing systems. Microsoft Office is ubiquitous in today's business world and this familiar environment is just one of the reasons users achieve a level of comfort with VIS almost immediately. Here is a breakdown of the ways VIS utilizes Microsoft Office:



**\*Venture = Purchase Order Shipment**  
**\*\*Containers Hold One or Many Ventures**

### **Microsoft Word**

- System-Generated Customs Documents
- Delivery Orders
- Customer Packing Lists
- Instruction Sheet (Broker Letter)
- Certificates of Analysis

When a client-side user attempts to maintain or print one of the documents listed above, the data is directly exported from the system to a Word Document while an instance of Word is opened using a standard template for that document. Provided the company's workstations have a version of Word installed, users will have all the functionality of Word to modify the document to the needs of the Customer/Vendor/Customs Broker etc.

### **Microsoft® Excel**

- Sales Orders
- Purchase Orders
- Invoices
- Product Position Sheet

The exceptional mathematical and data entry capabilities of Microsoft® Excel make it the obvious choice for more data-driven document maintenance. VIS standard calculations are done for you, but allowing the user to work in the Excel interface gives them the opportunity to really stretch the power of the spreadsheet application in a controlled environment. By protecting cells that generally shouldn't be edited after the creation of the document, we can limit the user to as little or as much control over the appearance of the above documents.

### **Microsoft® Outlook/Outlook Express**

- Email

VIS leverages the power of Microsoft® Outlook to enable users to click on any email address throughout the system in View Mode and automatically be sent to an instance of MS Outlook or Outlook Express with the email address already filled in as the receiver of the email.

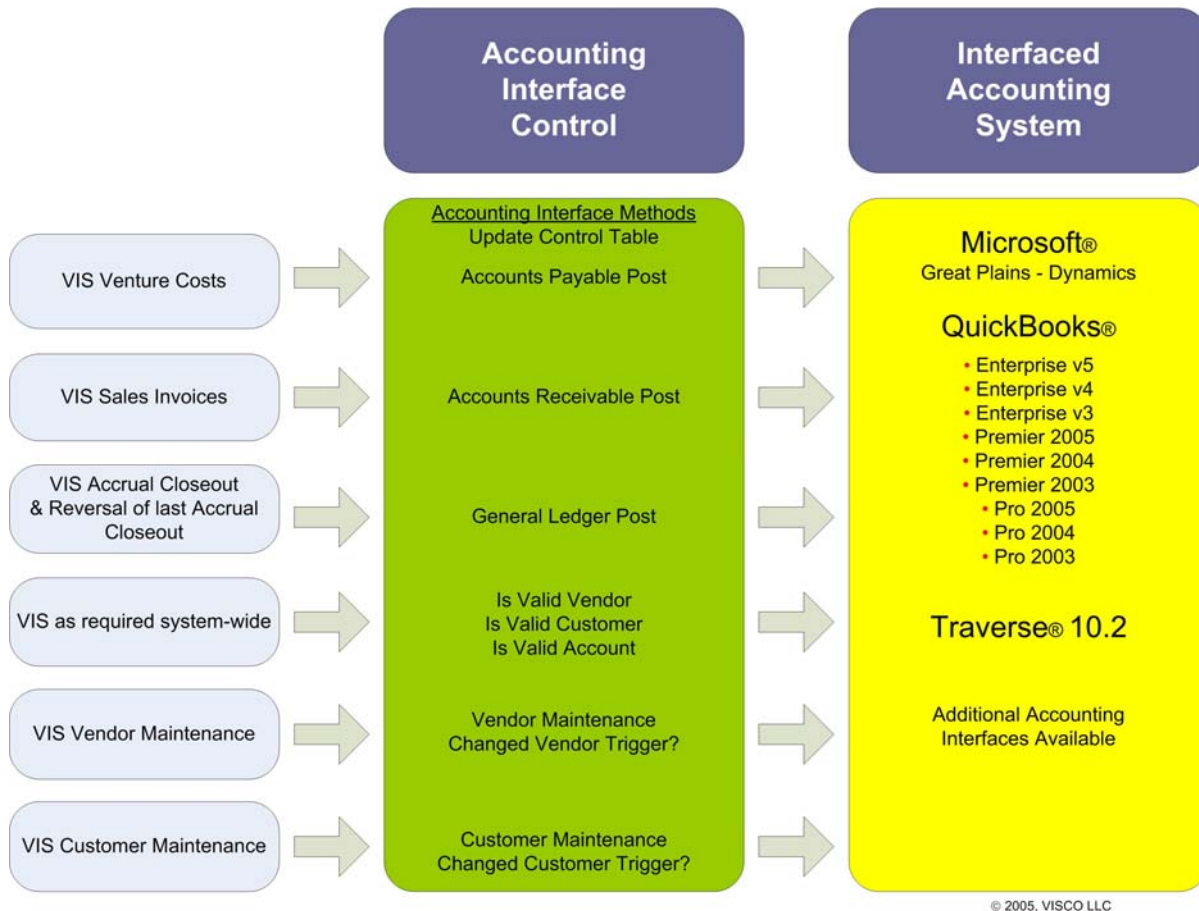
## **Accounting Interfaces**

### **Microsoft® Great Plains**

VIS was originally developed to integrate with the Microsoft® Great Plains accounting system. We are Microsoft® Certified Partners and our staff is constantly training to make sure that we are able to offer the latest and greatest technologies from this industry giant.

### QuickBooks®

Because VIS was specifically designed with small and medium sized importers in mind it was only natural that we integrate with the industry leader in small and medium sized business accounting systems: QuickBooks® from Intuit®. As a founding member of the QuickBooks® Developer Network, VISCO is the primary ERP application for importers using QuickBooks®.



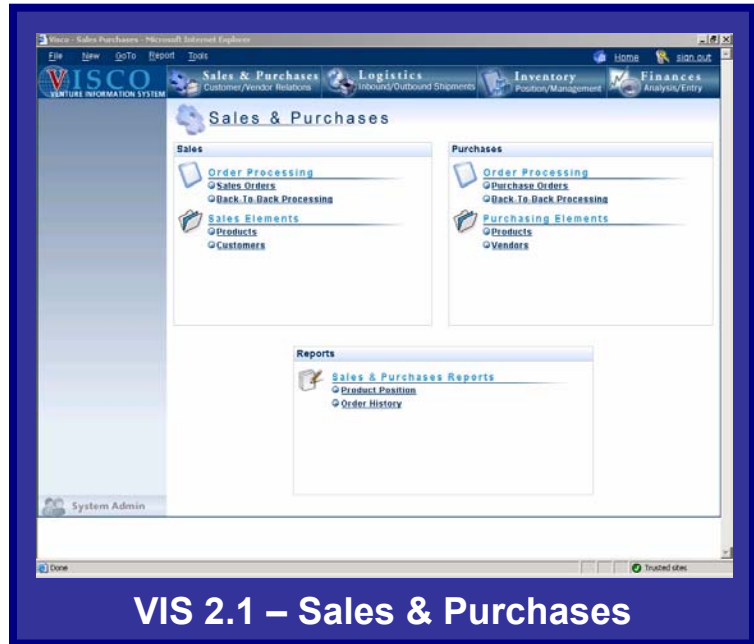
### Configuration and Customization

The Venture Information System is extremely malleable and easily configured to specific verticals within the importing industry. The particulars of configuration are defined by the use of an extensive questionnaire and pre-installation conferences. Configurations are not billable to the customer. Should your company's needs extend beyond configuration, our development team is capable of customizing VIS to your exact specifications. The original developers of VIS are still involved in the day-to-day operations of the company and their guidance ensures that customizations are well-conceived and extremely cost-effective.



## Sales Order

The VIS Sales Order offers many features to facilitate processing orders via the Web from anywhere in the world. Sales Orders can be Assigned, Prepared, Viewed and Issued by multiple users. VIS allows the user to copy, paste and edit information from previous Sales Orders to expedite data entry. The work of Sales Order generation can be divided between the individual Sales Representative and the Sales Department admin as desired. Detailed customer and product information is pulled from the customer and product tables within the system. Other specific features include:



- Multiple “ship-to” addresses stored with each customer
- Detailed shipment scheduling
- Detailed delivery information
- Option to place blanket orders
- Foreign currency exchange rate calculation
- Several industry specific and user defined fields available
- Ability to place back-to-back orders
- Delivery Order generation
- Ability to match at the source, in transit or received inventory to the Sales Order
- Order entry on one continuous scrolling Web page
- Multiple line items may be entered on the same order
- Drill down capability to access Customer Order History

## Purchase Order

As with all aspects of the Venture Information System, the Purchase Order module offers many features to facilitate processing orders via the Web from anywhere in the world. Purchase Orders can be Assigned, Prepared, Viewed and Issued by multiple users (with proper permissions). Users may copy, paste and edit information from previous Purchase Orders to expedite data entry. The work of Purchase Order generation can be divided between the Purchasing Manager and associated staff as desired. Detailed vendor and product information is pulled from VIS’ central SQL database. Other PO features include:

- Detailed shipment scheduling

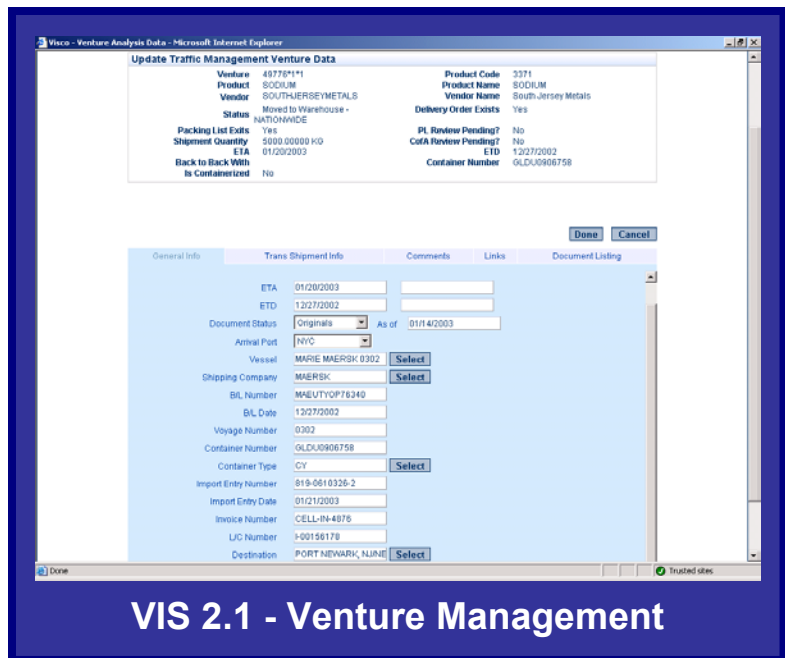
- Detailed delivery information
- Option to place blanket orders
- Foreign currency exchange rate calculation
- Several industry specific and user defined fields available
- Ability to place back-to-back (drop ship) orders
- Documentation Capture for use by U.S. Customs
- Order entry on one continuous scrolling Web page
- Multiple line items may be entered on the same order
- Drill down capability to access Vendor Order History

### Certificate of Analysis

The need for display and analysis of product specifications is essential in numerous Import industries, such as chemicals, nutraceuticals, and food & beverage. VIS allows users to spell out the precise specifications associated with a given shipment of a product, and to provide documentation of these specifications to both suppliers and customers. The user can store the purchase order specifications and compare them to a vendor's Certificate of Analysis ensuring that the product they are receiving is exactly what they ordered. This information can be provided to a customer who requests a product with specifications they previously identified. The system actually compares customer needs to product specs, to ensure that the product fits the requests of the customer. The flow of the Certificate of Analysis within the system is easy to follow and easy to use. But if your company does not require this type of functionality, we'll quickly and easily configure VIS to ignore these steps.

### Venture Management

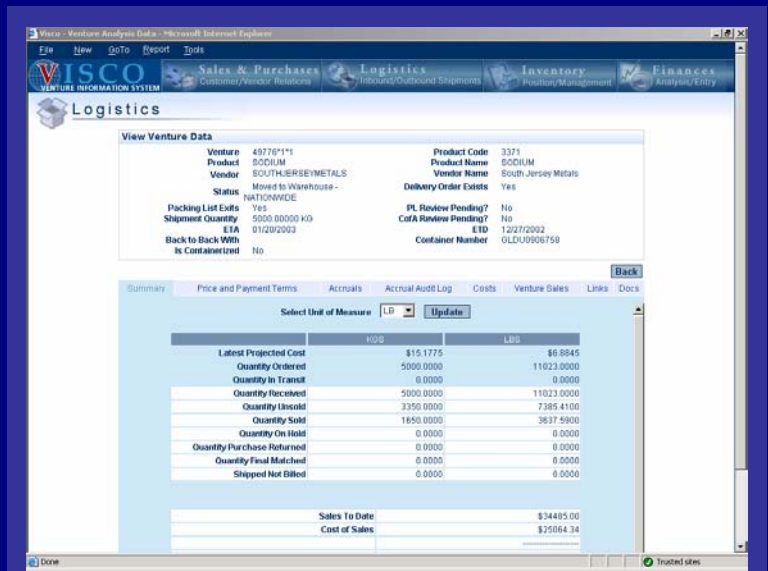
Venture Management is generally done by the Traffic or Logistics Department. All documents received by the Traffic Department (i.e., Certificate of Origin, Bill of Lading, Commercial Invoice, Packing List, etc.) can be stored with a Venture and viewed by sales, traders and other departments, according to the setup restrictions.



**VIS 2.1 - Venture Management**

## Venture Analysis (Landed Cost)

When a venture leaves the vendor's facility, it becomes "In Transit" and we begin to gather costs and accruals against that specific Venture. As inventory from that Venture is sold, we post sales against the Venture as well. The automation of this process frees your staff to spend time analyzing results rather than sorting through paper work. Venture Analysis allows the financial decision makers to get an accurate picture of the latest projected cost of any given venture in a matter of seconds, as well as a gross profitability statement on that venture. We use the term Latest Project Cost to indicate that the cost provided may be a combination of actual costs and accruals.



The screenshot displays the 'Logistics' module of the VISCO system. It shows a 'View Venture Data' window with the following details:

- Venture: 49776111
- Product: SODIUM
- Vendor: SOUTHERNSEMETALS
- Status: Moved to Warehouse -
- Packing List Exits: Yes
- Shipment Quantity: 5000.00000 KG
- ETA: 01/20/2003
- Back to Back With % Containers: No
- Product Code: 3371
- Product Name: SODIUM
- Vendor Name: South Jersey Metals
- Delivery Order Exists: Yes
- PL Review Pending?: No
- CoFA Review Pending?: No
- ETD: 12/27/2002
- Container Number: OLDU0906758

Below the data is a table showing the 'Latest Projected Cost' and other metrics for the venture, with columns for 'Kilograms' (KG) and 'Pounds' (LBS).

	KG	LBS
Latest Projected Cost	\$15,1775	\$6,8845
Quantity Ordered	5000.0000	11023.0000
Quantity In Transit	0.0000	0.0000
Quantity Received	5000.0000	11023.0000
Quantity Invoiced	3350.0000	7385.4100
Quantity Sold	1650.0000	3637.5900
Quantity On Hand	0.0000	0.0000
Quantity Purchase Returned	0.0000	0.0000
Quantity Final Matched	0.0000	0.0000
Shipped Not Billed	0.0000	0.0000
Sales To Date:		\$34485.00
Cost of Sales:		\$25064.34

At the bottom of the screenshot, the text reads: **VIS 2.1 – Venture Analysis (Landed Cost)**

## Product Position

The Venture Information System was developed with a focus on providing tools for salespeople and traders to have access to information about product availability and position, as well as order status details. Developed using the familiar Microsoft Excel® Spreadsheet application, the Product Position Sheet is one of the most unique and powerful tools in VIS, allowing your sales department to view inbound and outbound product position day by day, month by month, and year by year. Salespeople have the ability to specify the unit of measure in which the product being queried is displayed, and can drill down into individual order details and shipment details (including Traffic Information). Product Position also shows the cyclical nature of sales for a particular product - at the product level or the customer level.

Though it's true of the entire system, it's important to note that the Position Sheet can be viewed by your sales people from across the room, across the country, or anywhere in the world. This flexible tool is designed to allow your Sales Department to generate new business efficiently and effectively.



**\*Venture = Purchase Order Shipment**  
**\*\*Containers Hold One or Many Ventures**

Microsoft Excel - PositionSheetClient1

File Edit View Insert Format Tools Data Window Help

Type a question for help

Reply with Changes... End Review...

Select Period of Time

Notes

Back To Back

Exclude Final Matched

Show Legend

Select Period of Time Monthly

Select Unit of Measure PIECE

	A	B	C	D	E	F	G	H	I	J	K	L	M
30			SOR	3316906	SO Issued	0	1323	0	0	0	0	0	0
31			SOR	3316907	SO Issued	0	110	0	0	0	0	0	0
32			SOR	3316908	SO Issued	0	441	0	0	0	0	0	0
33			SOR	3316909	SO Issued	0	1984	0	0	0	0	0	0
34			SOR	3316910	SO Issued	0	1874	0	0	0	0	0	0
35			SOR	3316911	SO Issued	0	441	0	0	0	0	0	0
36			SOR	3316912	SO Issued	0	220	0	0	0	0	0	0
37			SOR	3316913	SO Issued	0	110	0	0	0	0	0	0
38			SOR	3316914	SO Issued	0	110	0	0	0	0	0	0
39			SOR	3316915	SO Issued	0	110	0	0	0	0	0	0
40			SINTERLAN	3331501	SO Issued	0	220	0	0	0	0	0	0
41			SINTERLAN	3331502	SO Issued	0	110	0	0	0	0	0	0
42			SINTERLAN	3331503	SO Issued	0	110	0	0	0	0	0	0
43			MORTONSILVER	4014101	MIDWEST	1440	0	0	0	0	0	0	0
44	Changes		MORTONSILVER	4042001	NATIONWIDE	59	0	0	0	0	0	0	0
45			EASYCHEM	4359508	SO Issued	0	551	0	0	0	0	0	0
46			DERBYIND	4898601	CDW	0	0	0	0	0	0	0	0
47	change the notes		MILLERTONSUPPLIERS	4987901	CDW	0	0	0	0	0	0	0	0
48					NATIONWIDE	0	0	0	0	0	0	0	0
49			MILLERTONSUPPLIERS	5020201	In Transit	0	750	0	0	0	0	0	0
50			SINERGYCORP	5042301	Moved to Warehouse	0	100	0	0	0	0	0	0
51			DRIRITEPHOTOCHEM	6387903	SO Issued	0	123458	0	0	0	0	0	0
52			LICHEM	6508306	SO Issued	0	3638	0	0	0	0	0	0
53			TACHEM	6625509	SO Issued	0	861	0	0	0	0	0	0
54			INKWELLINKS	6701303	SO Issued	0	6118	0	0	0	0	0	0
55			3BROS	6755001	SO Issued	0	0	1	0	0	0	0	0
56			ALLWAYS LTD	6758801	SO Issued	0	0	10	0	0	0	0	0
57			ACEGEAR	6764101	SO Issued	0	0	2	0	0	0	0	0
58			ALLWAYS LTD	6765101	SO Issued	0	0	30	0	0	0	0	0
59			ALLWAYS LTD	6765801	SO Issued	0	0	1	0	0	0	0	0
60					Inbound Totals	1499	850	0	0	0	0	0	0
61					Outbound Totals	0	151394	44	0	0	0	0	0
62					Balance Available	1499	-150544	-44	0	0	0	0	0
63					Cumulative Available	1499	-149045	-149089	-149089	-149089	-149089	-149089	-149089

Position Sheet

Ready

NUM

## VIS 2.1 – Product Position (Detail)

### Venture Sort and Filter

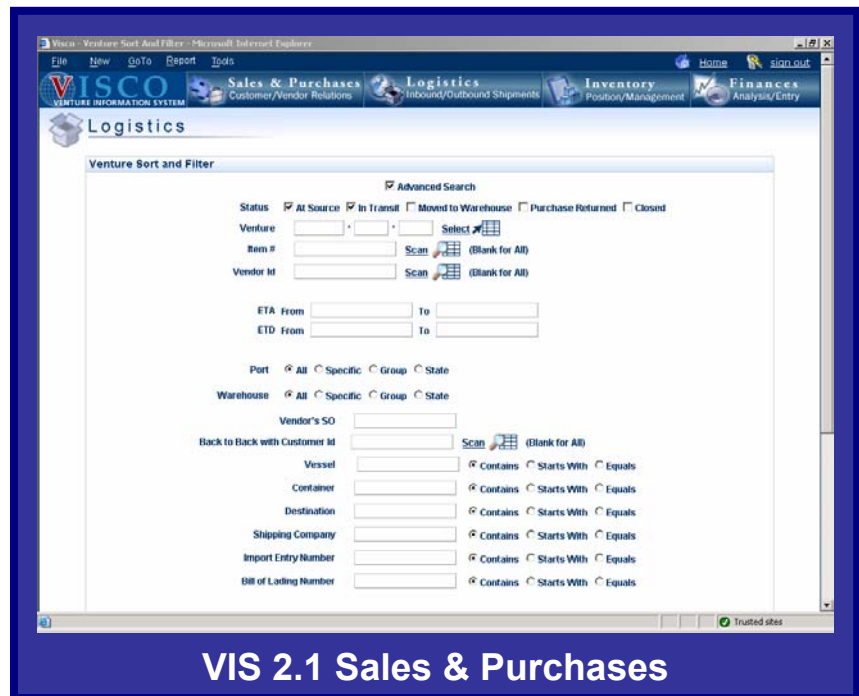
The VIS Venture Sort and Filter feature provides quick and easy access to information about the data in your system. Designed to be comprehensive and user friendly, the Venture Sort and Filter features allow users to identify, view, and/or edit any Venture in the system. If a user needs to identify all open Ventures of a given product expected to arrive at the Port of LA, between January 2005 and October 2005, listing them alphabetically by Vendor name: Venture Sort and Filter will provide this information in seconds.

**Search by single fields or combinations of fields, and choose a sorting order:**

- Venture Number
- Item Number
- Vendor
- ETA/ETD
- Port
- Warehouse
- Vendor's Sales Order Number
- Vessel Name
- Container Number
- Destination
- Shipping Company
- Import Entry Number
- Bill of Lading Number
- Customs House Broker
- P/L Quantity Review Pending
- C of A Review Pending
- Status:
  - At Source*
  - In Transit*
  - Moved to Warehouse*
  - Purchase Returned*
  - Closed*

**Venture Sort and Filter facilitates improvement in these and other areas:**

- Risk Management**
- Sales**
- US Customs Compliance**
- Customs Broker Requests**
- Logistics**
- Inventory**
- Response to Vendor Requests**
- Response to Customer Requests**
- Forecasting**
- Sarbanes-Oxley Compliance**

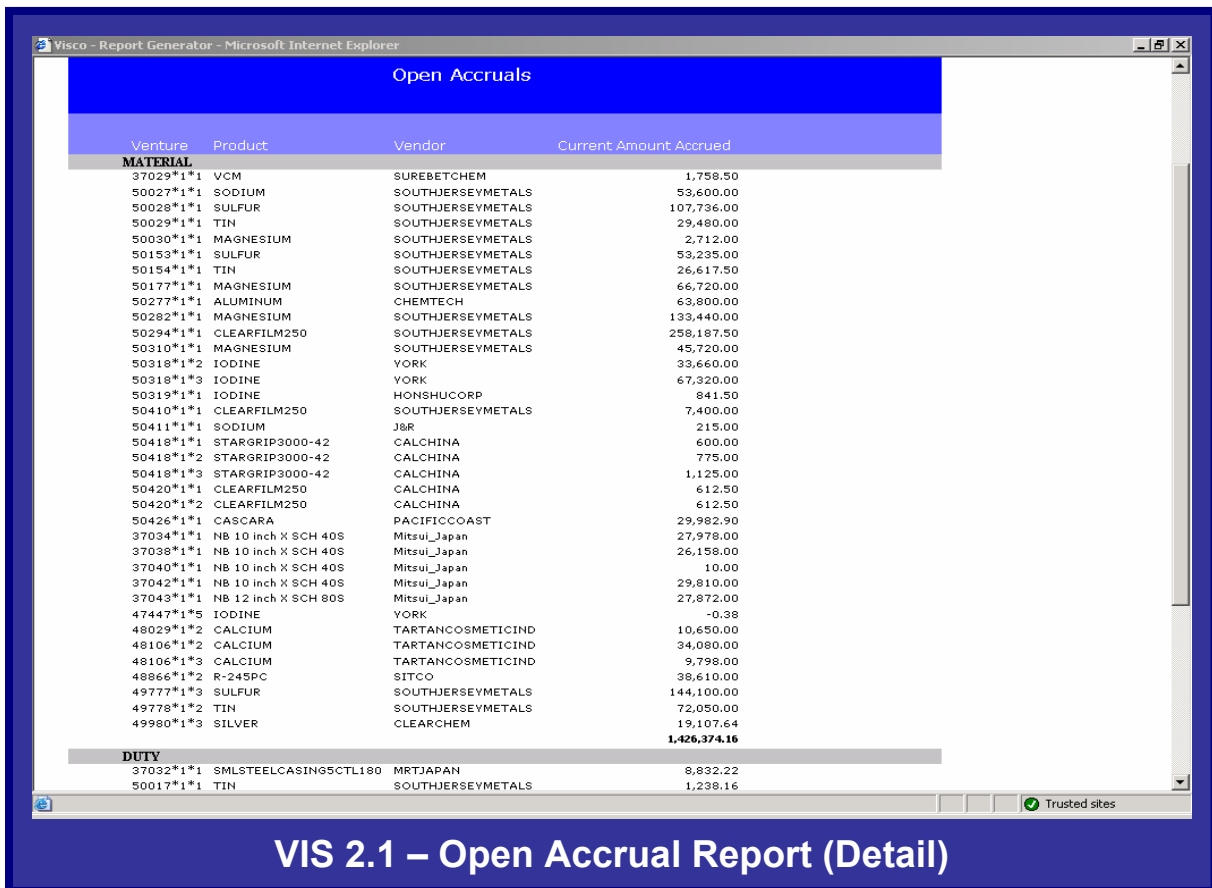


**Reporting**

Reporting is an essential function for any importing company. The global trade industry is extremely volatile so understanding trends and the ability to adjust to changing market conditions is crucial. The Venture Information System offers numerous reports that allow upper management to analyze the success of their importing processes. Though the Product Position Sheet, Venture Analysis, and Venture Sort and Filter, are generally considered the most powerful single reports within the system, there are numerous others, which help make V.I.S. as much of an Analysis tool as it is an ERP system.

VIS Uses Crystal Reports to generate both standard and custom reports. Reporting capabilities are virtually unlimited.

- o Accrual Closeout Report
- o Gross Margin Report
- o Invoice Report
- o Inventory Valuation Report
- o In Transit Report
- o Open Accrual Report
- o Sales by Trader
- o Sales by Product
- o Release Report
- o Venture Report
- o Venture Costs Report
- o Venture Analysis Report
- o Release Analysis Report
- o Order History
- o Product Position
- o Venture Sort and Filter
- o Release Sort and Filter
- o Inventory Management



Venture	Product	Vendor	Current Amount Accrued
<b>MATERIAL</b>			
37029*1*1	VCN	SUREBETCHEM	1,758.50
50027*1*1	SODIUM	SOUTHJERSEYMETALS	53,600.00
50028*1*1	SULFUR	SOUTHJERSEYMETALS	107,736.00
50029*1*1	TIN	SOUTHJERSEYMETALS	29,480.00
50030*1*1	MAGNESIUM	SOUTHJERSEYMETALS	2,712.00
50153*1*1	SULFUR	SOUTHJERSEYMETALS	53,235.00
50154*1*1	TIN	SOUTHJERSEYMETALS	26,617.50
50177*1*1	MAGNESIUM	SOUTHJERSEYMETALS	66,720.00
50277*1*1	ALUMINUM	CHEMTECH	63,800.00
50282*1*1	MAGNESIUM	SOUTHJERSEYMETALS	133,440.00
50294*1*1	CLEARFILM250	SOUTHJERSEYMETALS	258,187.50
50310*1*1	MAGNESIUM	SOUTHJERSEYMETALS	45,720.00
50318*1*2	IODINE	YORK	33,660.00
50318*1*3	IODINE	YORK	67,320.00
50319*1*1	IODINE	HONSHUCORP	841.50
50410*1*1	CLEARFILM250	SOUTHJERSEYMETALS	7,400.00
50411*1*1	SODIUM	J&R	215.00
50418*1*1	STARSRIP3000-42	CALCHINA	600.00
50418*1*2	STARSRIP3000-42	CALCHINA	775.00
50418*1*3	STARSRIP3000-42	CALCHINA	1,125.00
50420*1*1	CLEARFILM250	CALCHINA	612.50
50420*1*2	CLEARFILM250	CALCHINA	612.50
50426*1*1	CASCARA	PACIFICCOAST	29,982.90
37034*1*1	NB 10 inch X SCH 40S	Mitsui_Japan	27,978.00
37038*1*1	NB 10 inch X SCH 40S	Mitsui_Japan	26,158.00
37040*1*1	NB 10 inch X SCH 40S	Mitsui_Japan	10.00
37042*1*1	NB 10 inch X SCH 40S	Mitsui_Japan	29,810.00
37043*1*1	NB 12 inch X SCH 80S	Mitsui_Japan	27,872.00
47447*1*5	IODINE	YORK	-0.38
48029*1*2	CALCIUM	TARTANCOSMETICIND	10,650.00
48106*1*2	CALCIUM	TARTANCOSMETICIND	34,080.00
48106*1*3	CALCIUM	TARTANCOSMETICIND	9,798.00
48866*1*2	R-245PC	SITCO	38,610.00
49777*1*3	SULFUR	SOUTHJERSEYMETALS	144,100.00
49778*1*2	TIN	SOUTHJERSEYMETALS	72,050.00
49980*1*3	SILVER	CLEARCHEM	19,107.64
			<b>1,426,374.16</b>
<b>DUTY</b>			
37032*1*1	SMLSTEELCASING5CTL180	MRTJAPAN	8,832.22
50017*1*1	TIN	SOUTHJERSEYMETALS	1,238.16

## Unit Level Tracking

Do you have risk management issues? Have you ever had to recall a product? One of the more unique features of VIS is the ability to track inventory at the individual unit level. By drilling down into a lot, package, container (or whatever the unit of storage is) the user can view detailed information about that specific unit. The Packing List is generated with an easy-to-use summary form, which automatically creates a detailed view of all units in a Venture.



**\*Venture = Purchase Order Shipment**  
**\*\*Containers Hold One or Many Ventures**

The Packing List below was generated for Venture #49776, a shipment of sodium. The shipment consists of multiple drums from the same lot. Should there be a recall of this product (and it's important to note that the product can be a chemical, a beverage, a child's toy, etc.) users can see at a glance what is still on hand, and what has been sold (including the Sales Order number which links to the customer) to facilitate the dissemination of necessary information.

**Summary Section:**

- Venture: 49776\*1\*1
- Product ID: SODIUM
- Product Name: SODIUM
- Vendor ID: SOUTHJERSEYMETALS
- Vendor Name: South Jersey Metals
- Total Quantity: 5,000.00000 KG Moved to Warehouse
- Quantity Available: 3,350.00000 KG In Warehouse NATIONWIDE
- Packing List Format: As Is Basis
- Package Type: Drum
- Status: Warehouse Receipt # 37964
- Date Received:

Lot Number	Drum #	Drum Gross	Drum Net	Package Sellable	Duty Paid	Status	Warehouse
210653	1	55.0000	50.0000	50.0000	Yes	Sold, S.O. 67485*1*1	NATIONWIDE
210653	2	55.0000	50.0000	50.0000	Yes	Sold, S.O. 67485*1*1	NATIONWIDE
210653	3	55.0000	50.0000	50.0000	Yes	Sold, S.O. 67485*1*1	NATIONWIDE
210653	4	55.0000	50.0000	50.0000	Yes	Sold, S.O. 67485*1*1	NATIONWIDE
210653	5	55.0000	50.0000	50.0000	Yes	Sold, S.O. 67485*1*1	NATIONWIDE
210653	6	55.0000	50.0000	50.0000	Yes	Sold, S.O. 67485*1*1	NATIONWIDE
210653	7	55.0000	50.0000	50.0000	Yes	Sold, S.O. 67485*1*1	NATIONWIDE
210653	8	55.0000	50.0000	50.0000	Yes	Sold, S.O. 67485*1*1	NATIONWIDE
210653	9	55.0000	50.0000	50.0000	Yes	Sold, S.O. 67485*1*1	NATIONWIDE
210653	10	55.0000	50.0000	50.0000	Yes	Sold, S.O. 67485*1*1	NATIONWIDE
210653	11	55.0000	50.0000	50.0000	Yes	Sold, S.O. 67485*1*1	NATIONWIDE
210653	12	55.0000	50.0000	50.0000	Yes	Sold, S.O. 67485*1*1	NATIONWIDE
210653	13	55.0000	50.0000	50.0000	Yes	Sold, S.O. 67506*1*1	NATIONWIDE
210653	14	55.0000	50.0000	50.0000	Yes		NATIONWIDE
210653	15	55.0000	50.0000	50.0000	Yes		NATIONWIDE
210653	16	55.0000	50.0000	50.0000	Yes		NATIONWIDE
210653	17	55.0000	50.0000	50.0000	Yes		NATIONWIDE
210653	18	55.0000	50.0000	50.0000	Yes		NATIONWIDE
210653	19	55.0000	50.0000	50.0000	Yes		NATIONWIDE
210653	20	55.0000	50.0000	50.0000	Yes		NATIONWIDE

**Labels and Arrows:**

- Lot Number (points to column 1)
- Drum # (points to column 2)
- Drum Gross (points to column 3)
- Drum Net (points to column 4)
- Package Sellable (points to column 5)
- Duty Paid? (points to column 6)
- Status (points to column 7)
- Warehouse (points to column 8)

**Table Caption:** VIS 2.1 Packing List (Detail)



**\*Venture = Purchase Order Shipment**  
**\*\*Containers Hold One or Many Ventures**

## Technology and Requirements

The Venture Information System was developed using the Microsoft® .NET® technology. This use of Web-based technology allows users to process back-office functions from anywhere in the world with nothing more than a web browser and an Internet connection. Traditionally, in a client server environment, remote access to back office applications was only possible with expensive private lines or slow dial-up services.

For companies with current systems in place, using .NET to develop VIS makes integration with these systems much easier because of the common language interfaces available from Microsoft. Your company's current Accounting, CRM, and other division-specific applications will have the ability to merge with VIS easily, as .NET gives our customization specialists the ability to develop interfaces written in a language that both applications understand.

The presentation layer of this system was developed using a three-tier technology: ASP.NET, Visual Basic.NET, and SQL Server 2000 as the database.

To host the Venture Information System locally, the following is required:

**Microsoft Windows 2000 Server®**  
**SQL Server 2000®**  
**Microsoft Office 2000® or later (client side) – for some users**  
**Internet Explorer 6.0® or later (client side)**

## Customer Support Services

### Integration

One of the key design features of the Venture Information System is the ability to integrate it with your current department-specific system already in place, including accounting or ABI. Enter the same data you enter now, but open up a new world of knowledge based on the effective use of that information. VIS also comes with plug-and-play capabilities using Microsoft Business Solutions-Great Plains® Dynamics Accounting Software as well as Great Plains modules including CRM, etc. The Venture Information System is also designed to integrate with an existing or new website so customers can get real-time information about the status of their orders, order history and other information.



**\*Venture = Purchase Order Shipment**  
**\*\*Containers Hold One or Many Ventures**

## **Customization**

VISCO offers the ability to customize all aspects of the system. We will leave a copy of the system on our servers so modifications and testing can be done at our office and then implemented during off hours so it doesn't disrupt your company during normal working hours.

## **Training**

Training is offered on-site and is typically given to one department at a time prior to installation. The first week after installation, the trainer will be available to visit your location to answer questions and help end-users get started. We base our reputation on the success of our implementations.

## **Installation**

We will do installations on site generally working hand-in-hand with your system administrator and primary users.

## **Support**

Telephone and on-site support is offered during normal business hours and is billed on an hourly basis. We recommend that employees direct questions to a system administrator or designated "super-users" and only upper management and the system manager is given the customer support phone numbers.

## **Company Profile**

### **Mission**

The Venture Information System Company's mission is the development and sale of the Venture Information System. The Venture Information System (VIS) is a software package designed specifically for importers to improve business efficiencies in the areas of venture (shipment) tracking, inventory management, and associated logistics. VISCO provides customers with a reasonably priced end-to-end solution. VISCO is a certified Microsoft® Business Solutions Partner. Although VIS may be integrated with existing legacy systems, our customers generally agree that no additional software is needed. VIS is The Importer's Enterprise Software Solution for small to medium-size companies.



**\*Venture = Purchase Order Shipment**  
**\*\*Containers Hold One or Many Ventures**

## **Our History**

The Venture Information System is based on a longstanding successful business application, originally designed by a multinational importer and distributor. During the early 1990s this importer

worked with an independent development team to create what is still used as the infrastructure for the company's high-volume importing operations. The system has dramatically improved the company's operations for over a decade.

In 2001, we reengineered the system, adding new features and taking advantage of the latest technology; the Venture Information System utilizes Microsoft's .NET Framework®, the first entirely Web-based application architecture. Today's Venture Information System is a combination of industry expertise and successful software design based on the globally accepted Microsoft foundation.

Thank you once again for your interest in the Venture Information System. We look forward to learning about your specific challenges, and to showing you how VIS can help you meet those challenges!